



Mahidol University
Wisdom of the Land

Faculty of Nursing and
Ramathibodi School of Nursing
Faculty of Medicine Ramathibodi Hospital

**Doctor of Philosophy Program
in Nursing Science
(International Program)**

HANDBOOK 2022

Student Handbook

Doctor of Philosophy Program in Nursing Science (International Program)

Academic Year 2022

1. Program Title

Doctor of Philosophy Program in Nursing Science (International Program)

2. Name of the Degree

Full name: Doctor of Philosophy Program (Nursing Science)

Abbreviation: Ph.D. (Nursing Science)

3. Responsible Units

3.1 Faculty of Nursing, Mahidol University

3.2 Ramathibodi School of Nursing, Faculty of Medicine Ramathibodi Hospital, Mahidol University

3.3 Faculty of Graduate Studies, Mahidol University

4. Mahidol University Educational Philosophy

“Our primary focus is on educating the learners, as for them to attain academic achievement through learning-centered education, outcome-based education and constructivism. To become a wisdom graduate, learners combine what they have learned so far with the new knowledge, and with experiential learning activities”

5. Program Learning Outcomes (PLOs)

Upon the completion of the program, the PhD graduates should have the following abilities:

5.1 Have responsibility according to professional code of conduct, ethics in relation to professional issues and health;

5.2 Apply a body of knowledge and build strong skills and expertise in developing research related to health;

5.3 Develop nursing research and innovation to develop a health and nursing service system;

- 5.4 Initiate changes to improve health care and nursing systems by showing leadership and teamwork skills, and understanding the diversity of multiculturalism;
- 5.5 Disseminate knowledge, transfer, and exchange knowledge in academic groups and public forums, and effectively use communication and digital technology at both national and international levels.

6. Academic System

6.1 Semester system

6.2 Credits

The number of credits assigned to each subject is determined as follows:

- 6.2.1 The lecture or seminar consuming 15 hours per semester is equal to 1 credit hour.
- 6.2.2 The dissertation or independent study consuming 45 hours per semester is equal to 1 credit hour.

7. Language

English is used in the instruction, paper, and dissertation writing.

8. Duration of Study

The duration of study should not be longer than the education plan (4 academic years designated in the curriculum) and must not exceed 6 academic years.

9. Registration

- 9.1 Students must register as full-time students.
- 9.2 Students must register no less than 8 credits but no more than 15 credits per regular semester, or up to the recommendation of the advisor.

10. Evaluation and Graduation Requirements

10.1 Evaluation

Student evaluation is in accordance with the rules and regulations of Mahidol University.

10.2 Graduation Requirements

- 10.2.1 For study Plan 1.1, a student holding a Master's degree are required to take 48

credits of dissertation and total credits for the program not less than 48 credits, with GPAX not less than 3.00 on 4.00 scale.

- 10.2.2 For study Plan 2.1, a student holding a Master's degree are required to take no less than 16 credits of course work and 36 credits of dissertation, total credits for the program not less than 52 credits, with GPAX not less than 3.00 on 4.00 scale;
- 10.2.3 Pass English Proficiency Examination; according to regulations of Faculty of Graduate Studies, Mahidol University;
- 10.2.4 Pass qualifying examination;
- 10.2.5 Participate in extra curriculum activities that meet the requirements of Faculty of Graduate Studies
(Look at <http://www.grad.mahidol.ac.th/softskills/en/>);
- 10.2.6 Complete the dissertation and pass oral dissertation examination required for graduation according to regulations of Faculty of Graduate Studies, Mahidol University; and
- 10.2.7 For study Plan 1.1, a student must publish two papers which are related to dissertation or get the acceptance letters for publication from international standard journals. For study Plan 2.1, a student must publish at least one paper in which is related to dissertation or get the acceptance letter for publication from an international standard journal.

11. Teaching Staffs

This doctoral program is a collaborative program between Faculty of Nursing, Mahidol University and Ramathibodi School of Nursing, Faculty of Medicine Ramathibodi Hospital, Mahidol University. The teaching staffs consist of those from both institutions, as well as guest lecturers from other universities including partnership schools in other countries.

Faculty of Nursing

No.	Name/Degree	Title	Area of Research
1	Ameporn Ratinthorn	Associate	1. Women's Health
	PhD (Nursing)	Professor	2. Health Care for Disadvantage Group of Women
	MA (Counseling Psychology)		
	BSc (Nursing and Midwifery)		

No.	Name/Degree	Title	Area of Research
2	Apawan Nookong PhD (Nursing) MSN (Pediatric Nurse Practitioner) MSc (Nursing) BSc (Nursing & Midwifery)	Associate Professor	1. Pediatric Nursing 2. Care of Children with Respiratory Problems and Family 3. Evidence-based Practice Research
3	Arunrat Srichantarant PhD (Nursing) MNS (Nursing Administration) BSc (Nursing & Midwifery)	Associate Professor	1. Families' Caring Practices for Children with CHD 2. Psychosocial Support for Families of Children with CHD and Other Chronic Illnesses 3. Information Sharing between Nurses and Parents of Hospitalized Children 4. Qualitative Research
4	Aurawamon Sriyuktasuth DSN MSc (Nursing) BN	Associate Professor	1. Nursing In Patients with Noncommunicable Diseases Especially Chronic Kidney Disease 2. Evidence-Based Nursing
5	Doungrut Wattanakitkrileart DNS MSc (Nursing) BSc (Nursing)	Associate Professor	1. Care of Chronic Illness 2. Nursing Care of Patients With Cardiothoracic Disorders 3. Stress Management Medication Adherence
6	Ketsarin Utriyaprasit PhD (Nursing) MS (Physiology) BN (Nursing and Midwifery)	Associate Professor	1. Nursing Care of Patients with Neurological Problems 2. Nursing Care of Patients with Cardio-Vascular Problems 3. Symptom Management 4. Health System Research
7	Nanthana Thananowan PhD (Nursing)	Associate Professor	1. Intimate Partner Violence, Violence Against Women, Dating Violence

No.	Name/Degree	Title	Area of Research
	MSN (Women's Health Nursing) BSc (Nursing and Midwifery)		2. STIs, Reproductive Health, Initial Breastfeeding
8	Nopporn Vongsirimas PhD (Nursing) MEd (Developmental Psychology) BSc (Nursing and Midwifery)	Associate Professor	1. Depression in Adolescents and Women 2. Psychosocial Intervention for Depressed Mothers
9	Piyanun Limruangrong PhD (Nursing) MNS (Maternal and Child Nursing) Dip in Nursing Science	Associate Professor	1. Care of Women with Gestational Diabetes Mellitus 2. Care of Women with Overweight and Obesity In Pregnancy 3. Nutrition and Physical Activity In Pregnant and Postpartum 4. Health Promotion for Women
10	Piyatida Nakagasien PhD (Nursing) MA BNS	Associate Professor	1. Community Health Nursing 2. Research Health System development/ Public Health Policy
11	Prangtip Chayaput PhD (Nursing) MSc (Adult Health Nursing) MS (Physiology) BSc (Nursing and Midwifery)	Associate Professor	1. Neurosurgical Nursing 2. Critical Care Nursing 3. Roy Adaptation Model 4. Cancer Care 5. Trauma Care
12	Somsiri Rungamornrat PhD (Nursing) MNS (Maternal and Child Nursing) BNS	Associate Professor	1. Neonatal Care 2. Health Promotion in Early Childhood 3. Qualitative Research
13	Sudaporn Payakkaraung PhD (Nursing) MNS (Pediatric Nursing) BNS	Associate Professor	1. Pain Management in Children 2. Pediatric Surgical Nursing 3. Nursing Care for Postoperative Children 4. Pediatric Critical Care Nursing 5. Clinical Judgment

No.	Name/Degree	Title	Area of Research
14	Suporn Danaidutsadeekul DNS MSc (Public Health) BSc (Nursing and Midwifery)	Associate Professor	1. Trauma & Critical Care Nursing 2. Transitional Care
15	Tassanee Prasopkittikun PhD (Nursing) MS (Parent-Child Nursing) MSc (Public Health) BSc (Nursing and Midwifery)	Associate Professor	1. Parenting & Child Development 2. Self-Efficacy 3. Tool Development
16	Usavadee Asdornwised PhD (Nursing) MSc (Medical-Surgical Nursing) BSc (Nursing and Midwifery)	Associate Professor	1. Cardiothoracic Nursing 2. Discharge Planning 3. Complementary and Alternative Medicine Uses in Nursing
17	Virapun Wirojratana PhD (Nursing) MSc (Gerontological Nursing) MSc (Nursing) Dip in Nursing Science	Associate Professor	1. Gerontological Nursing 2. Health Care System in Elderly 3. Continuing Care: Home Care for Elderly with Chronic Illness; Diabetes 4. Family Caregiver
18	Wanlaya Thampanichawat PhD (Nursing) MSc (Nursing) Dip in Nursing Science	Associate Professor	1. HIV/AIDS in Children and Families 2. Stress and Coping in Children and Families 3. Qualitative Research
19	Wimolrat Puwarawuttipanit PhD (Neurosciences) MSc (Medical-Surgical Nursing) BSc (Nursing and Midwifery)	Associate Professor	1. Neurosciences and Neurology Nursing 2. Chronic Illness 3. Health Promotion 4. Anti-aging
20	Yajai Sitthimongkol PhD (Nursing) MS (Psychiatric Nursing) MSc (Clinical Psychology)	Associate Professor	1. Stress, Coping and Adaptation 2. Chronic Mental Illness and Caregivers

No.	Name/Degree	Title	Area of Research
	BSc (Nursing)		
21	Atittaya Pornchaikate Au-Yeong	Assistant	1. Adolescent Health
	PhD (Nursing)	Professor	2. Mental Health Promotion
	MS (Mental Health and Psychiatric Nursing)		3. Health Counseling
	MS (Mental Health)		
	BSc (Nursing and Midwifery)		
22	Napaporn Wanitkun	Assistant	1. Adult Nursing
	PhD (Gerontological Nursing)	Professor	2. Cardiothoracic Nursing
	MS (Physiology)		3. Health Behavior Change
	BSc (Nursing and Midwifery)		4. Gerontological Nursing
23	Sirada Kesornsri	Assistant	1. Mental Health Promotion among
	PhD (Nursing)	Professor	Minority Groups (Migrant Workers)
	MNS (Mental Health and Psychiatric Nursing)		2. Mental Health Promotion and Related Factors among
	BNS		Adolescence
24	Supapak Phetrasuwan	Assistant	1. Child and Adolescent Mental
	PhD (Nursing)	Professor	Health
	MS (Psychiatric Mental Health Nursing)		2. Autism Spectrum Disorders and Other Neurodevelopmental
	BNS		Disorders
			3. Mental Health Counselling
			4. Mental Health Promotion
25	Thitipong Tankumpuan	Assistant	1. Cardiovascular Nursing
	PhD (Nursing)	Professor	2. Social Determinants of Health
	MNS (Adult Nursing)		
	BNS		
26	Wanna Phahuwatanakorn	Assistant	1. Postpartum Care
	PhD (Nursing)	Professor	2. Social Support
	MSN (Health Care of Women Nurse Practitioner)		3. Maternal and Child Health
	MSc (Public Health)		

No.	Name/Degree	Title	Area of Research
	BSc (Nursing and Midwifery)		
27	Warunee Phligbua	Assistant	1. Oncology Nursing
	PhD (Nursing)	Professor	2. Menopausal Symptoms
	MNS (Adult Nursing)		3. Symptom Management
	BNS		4. Complementary Therapy
28	Kessiri Wongkongkam	Lecturer	1. Nursing Management among Cardiovascular Patients
	PhD (Nursing)		
	MNS (Adult Nursing)		2. Quality of Life and Quality of Care among Gastrointestinal Tract Patients
	BNS		

Ramathibodi School of Nursing, Faculty of Medicine Ramathibodi Hospital

No.	Name/Degree	Title	Area of Research
1	Bualuang Sumdaengrit	Associate	1. Women's Health
	PhD (Nursing)	Professor	2. Women with Gynecological Problems and Gynecologic Oncology Problems
	MSN (Adult Nursing)		
	BSc (Nursing and Midwifery)		
2	Manee Arpanantikul	Associate	1. Women's Health
	PhD (Nursing)	Professor	2. Health Promotion for Healthy Women and Women with Chronic Conditions
	MSc (Nursing)		
	MSc (Nutrition)		
	BSc (Nursing and Midwifery)		3. Qualitative Research
3	Noppawan Piaseu	Associate	1. Nutrition and Food Security in Urban Population
	PhD (Nursing)	Professor	
	MS (Nutrition)		2. Health Promotion for Prevention and Control of NCDs in Community
	MS (Nursing Administration)		
	BSc (Nursing and Midwifery)		3. Health Service System
4	Patcharin Nintachan	Associate	1. Resilience
	PhD (Nursing)	Professor	2. Risk-taking Behavior
	MNS (Mental Health and Psychiatric Nursing)		3. Schizophrenia
	BSc (Nursing and Midwifery)		4. Mental Health Problems in Disadvantaged Youth

No.	Name/Degree	Title	Area of Research
5	Pisamai Orathai PhD (Educational Research Methodology) MEd (Development Psychology) BSc (Nursing and Midwifery)	Associate Professor	1. Nursing Ethics 2. Quantitative Research 3. Statistics
6	Poolsuk Janepanish Visudtibhan PhD (Nursing Science) MNS (Nursing Education) BSc (Nursing and Midwifery)	Associate Professor	1. HIV/AIDS Nursing Care 2. Nursing Education 3. HIV Counseling
7	Renu Pookboonmee DNS MEd (Nursing Administration) BSc (Nursing and Midwifery)	Associate Professor	1. Chronic Illness 2. Adolescent Health 3. Women's Health
8	Sangthong Terathongkum PhD (Nursing) MSc (Human Reproduction and Population Planning) BSc (Nursing and Midwifery)	Associate Professor	1. Family Nurse Practitioner 2. Relaxation Techniques: Meditation
9	Srisamorn Phumonsakul DNS MS (Critical Care Nursing) BSc (Nursing and Midwifery)	Associate Professor	1. Parental Role Adaptation (Maternal & Paternal Role Attainment) 2. High-risk Pregnancy & Midwifery 3. Scale & Instrument Development 4. Research Methodology
10	Suchira Chaiviboontham PhD (Nursing) MS (Biopharmaceutical Science) BNS	Associate Professor	1. Palliative Care Nursing, Oncology Nursing, Surgical Nursing, Chronic Care 2. Symptom Experience and Management in Cancer Patients
11	Suparb Aree-Ue PhD (Nursing) MNS (Adult Nursing)	Associate Professor	1. Health Promotion in Adults and Elderly with Bone and Joint

No.	Name/Degree	Title	Area of Research
	BSc (Nursing and Midwifery)		Problems, Especially Osteoarthritis and Osteoporosis
			2. Chronic Illness in Older Adults
			3. Long-Term Care
12	Supreeda Monkong	Associate	1. Gerontological Nursing
	PhD (Gerontological Nursing)	Professor	2. Family Caregiver
	MS (Gerontological Nursing)		3. Critical Care Nursing
	BSc (Nursing and Midwifery)		
13	Wantana Maneesriwongul	Associate	1. HIV/AIDS Care
	DNSc	Professor	2. Chronic Diseases, Treatment Adherence and Self-Management
	MPH (Biostatistics & Epidemiology)		3. Instrument Development and Instrument Translation
	BSc (Nursing and Midwifery)		4. Community Health
14	Apinya Siripitayakunkit	Assistant	1. Cardiovascular Nursing
	PhD (Nursing)	Professor	2. Nursing Care of Persons with Metabolic Syndrome
	MSc (Public Health)		
	BSc (Nursing and Midwifery)		
15	Autchareeya Patoomwan	Assistant	1. Palliative Care in Children
	PhD (Nursing)	Professor	2. Symptom Management in Children with Cancer
	MSc (Nursing)		3. Quality of Life in Children with Cancer
	BSc (Nursing and Midwifery)		
16	Kamonrat Kittipimpanon	Assistant	1. Health Promotion for Older Adults
	DrPH (Public Health Nursing)	Professor	2. Community-Based Fall Prevention Model for Older Adults
	MNS (Adult Nursing)		3. Fall Health Literacy in Older Adults
	BNS		
17	Phachongchit Kraithaworn	Assistant	1. Community Mental Health
	PhD (Nursing)	Professor	2. Older Adults' Mental Health
	MSc (Mental Health)		3. Health Promotion
	BSc (Nursing and Midwifery)		4. Chronic Illness

No.	Name/Degree	Title	Area of Research
18	Piyawan Pokpalagon PhD (Nursing) MNS (Adult Nursing) BNS	Assistant Professor	1. Palliative Care/ End-of-Life Care 2. Cancer
19	Sirirat Leelacharas PhD (Nursing) MS (Medical Surgical Nursing) BNS	Assistant Professor	1. Applying the Common Sense Model of Illness Representations to Acute and Chronic Illnesses 2. Acute Care Nursing Focusing on Cardiovascular, Pulmonary, and Neurological Nursing 3. Adult Health Nursing
20	Sopin Sangon PhD (Nursing) MS (Psychiatric Mental Health Nursing) BNS	Assistant Professor	1. Depression Across Life Span 2. Resilience and Depression 3. Schizophrenia
21	Streerut Thadakant PhD (Nursing) MS (Midwifery) MSc (Public Health, Major in Nutrition) BSc (Nursing and Midwifery)	Assistant Professor	1. Midwifery Practice 2. Midwifery Profession 3. Nursing & Midwifery Education
22	Tipawan Daramas PhD (Nursing) MSc (Nursing) BSc (Nursing and Midwifery)	Assistant Professor	1. Developmental Care in Premature Infants 2. Pain Management in Newborn 3. Breastfeeding in Sick Newborn 4. Oral Stimulation in Premature Infants
23	Tiraporn Junda PhD (Nursing) MS (Nursing) BNS	Assistant Professor	1. Oncology Nursing 2. Palliative Care 3. Symptom Management 4. Qualitative Method

No.	Name/Degree	Title	Area of Research
24	Tusana Thaweekoon PhD (Nursing) MS (Psychiatric & Mental Health Nurse Practitioner) MSc (Nutrition) BSc (Nursing and Midwifery)	Assistant Professor	1. Bullying and Cyberbullying in Children and Adolescents 2. Child and Adolescent Psychiatric and Mental Health Nursing

12. Program Administrative Committee

The followings are the Program Administrative Committee:

12.1	Professor Emeritus Dr. Somchit Hanucharurnkul	Consultant
12.2	Dean of Faculty of Nursing	Advisory Committee
12.3	Director of School of Nursing Ramathibodi Hospital Faculty of Medicine Ramathibodi Hospital	Advisory Committee
12.4	Associate Professor Dr. Tassanee Prasopkittikun	Program Chair
12.5	Associate Professor Dr. Manee Arpanantikul	Co-Program Chair
12.6	Assistant Professor Dr. Wanna Phahuwatanakorn	Committee Member
12.7	Assistant Professor Dr. Apinya Siripitayakunkit	Committee Member
12.8	Associate Professor Dr. Aurawamon Sriyuktasuth	Committee Member and Secretary
12.9	Associate Professor Dr. Wantana Maneesriwongul	Committee Member and Assistant Secretary

13. Location to study

The program will be conducted mainly at:

- 13.1 Faculty of Nursing, Mahidol University at both Bangkoknoi and Salaya Campuses
- 13.2 Ramathibodi School of Nursing, Faculty of Medicine Ramathibodi Hospital,
Mahidol University at both Phayathai and Salaya Campuses

14. Library

There are various library resources and services located in Mahidol University to which the students are able to access. These libraries have various textbooks, and electronic books, journals as well as databases to facilitate academic assignments.

15. Budget

The total educational cost for completion of the program is approximately 570,000 Baht.

16. Program Curriculum

16.1 The number of credits required for the program

Plan 1.1 At least 48 credits

Plan 2.1 At least 52 credits

16.2 Curriculum Structure

The program is set according to the Ministry of Education Announcement entitled “Standard Criteria for Graduate Studies 2015” with specified Plan 1.1 and Plan 2.1 curriculum as follows:

A. Plan 1.1: Dissertation

1) Dissertation	48	credits
Total	48	credits

B. Plan 2.1: Course work and Dissertation

1) Required courses	12	credits
2) Elective courses no less than (Concentration area)	4	credits
3) Dissertation	36	credits
Total	52	credits

16.3 Course Requirements

16.3.1 Plan 1.1

	Credits (lecture-lab Self-Study)
RANS 898/ NSID 898 Dissertation	48 (0-144-0)

16.3.2 Plan 2.1

1) Required Courses	12	credits	
			Credits (lecture-lab Self-Study)
RANS 608	Philosophy of Science and Nursing Science		2 (2-0-4)
NSID 551	Nursing Leadership in Health Delivery System		2 (2-0-4)

RANS 609	Advanced Research Design in Nursing	2 (2-0-4)
NSID 552	Nursing Theory Development	2 (2-0-4)
RANS 651	Advanced Statistics in Health Sciences	2 (2-0-4)
NSID 558	Qualitative Research	2 (1-2-3)

2) Elective Courses no less than 4 credits

Students select only one substantive area with 4 credits which serves their interesting and basis for the dissertation.

	Credits (lecture-lab Self-Study)
RANS 629 Gender and Health: Theory and Research	2 (2-0-4)
NSID 525 Seminar in Nursing and Health Policy Development	2 (2-0-4)
RANS 630 Family Health Studies	2 (2-0-4)
NSID 555 Health Promotion	2 (2-0-4)
RANS 652 Measurement and Instrumentation	2 (2-0-4)
NSID 557 Stress, Coping and Adaptation	2 (2-0-4)
RANS 690 Outcome Research: Measurement and Management	2 (2-0-4)
NSID 671 Mixed Methods Research	2 (2-0-4)
RANS 695 Chronic Illness	2 (2-0-4)
NSID 672 Care Management of Chronic Illness in Community	2 (2-0-4)
NSID 673 Critical and Emergency Care System	2 (2-0-4)
NSID 674 Scholarly Inquiry in Nursing Science	2 (2-0-4)
RANS 669/NSID 567 Selected Topic in Nursing [#]	2 (2-0-4)

[#] S (Satisfactory) or U (Unsatisfactory)

Students might register in any graduate courses offered at Faculty of Nursing or Ramathibodi School of Nursing, Faculty of Medicine Ramathibodi Hospital or other faculties/institutions under supervision of the academic advisor and will be considered as elective courses in order to fulfill the requirements of this program.

3) Dissertation 36 credits

	Credits (lecture-lab Self-Study)
RANS 699/ NSID 699 Dissertation	36 (0-108-0)

16.4 Research Projects of the Program

Guideline for research projects of the program focuses on the following areas:

Health Promotion

1. Breast feeding promotion
2. Prevention of sexual risk behavior in school age children and adolescent
3. Health behavior and health promotion of all age groups in healthy, risk, and illness conditions
4. Women's health
5. Life cycle of family and health
6. Mental health promotion and mental health and psychiatric problems
7. Food security

Prevention and management of chronic disease

1. Self-management of patients with chronic disease
2. Symptom management of patients with chronic disease and psychiatric disease
3. Management of patients with chronic disease and elderly in community
4. Palliative care
5. Chronic Care system
6. Caregivers

Prevention and management of critical and emergency condition

1. Emergency care system
2. Management and care for disaster

16.5 Course Code Explanation

Two first letters represent the abbreviated name of Faculty/Institute/ College.

NS = Faculty of Nursing

RA = Faculty of Medicine Ramathibodi Hospital

The third and fourth letters represent the abbreviated name of responsible units.

NS = Department of Nursing

ID = Inter-department Courses

The first numbers (5XX and 6XX) represent postgraduate program level.

17. Study Plan

17.1 Plan 1.1*

Year	Semester 1	Semester 2
1	RANS 898/ NSID 898 Dissertation	RANS 898/ NSID 898 Dissertation
	Summer Semester <i>Qualifying Examination (QE)</i>	
2	RANS 898/ NSID 898 Dissertation <i>Dissertation Proposal Examination</i>	RANS 898/ NSID 898 Dissertation
3	RANS 898/ NSID 898 Dissertation	RANS 898/ NSID 898 Dissertation
4	RANS 898/ NSID 898 Dissertation <i>Writing Dissertation, Writing Manuscript</i> <i>Dissertation Defense Examination</i>	RANS 898/ NSID 898 Dissertation <i>Dissertation Defense Examination</i>

* Required total research experiences 240 hours.

17.2 Plan 2.1**

Year	Semester 1	Semester 2
1	RANS 608 Philosophy of Science 2(2-0-4) and Nursing Science NSID 552 Nursing Theory 2(2-0-4) Development RANS 651 Advanced Statistics in 2(2-0-4) Health Sciences Elective Course 2(2-0-4) Total 8 Credits	RANS 609 Advanced Research 2(2-0-4) Design in Nursing NSID 551 Nursing Leadership in 2(2-0-4) Health Delivery System NSID 558 Qualitative Research 2(1-2-3) Elective Course 2(2-0-4) Total 8 Credits
2	<i>Qualifying Examination (QE)</i> RANS 699/ NSID 699 Dissertation	RANS 699/ NSID 699 Dissertation <i>Dissertation Proposal Examination</i>
3	RANS 699/ NSID 699 Dissertation	RANS 699/ NSID 699 Dissertation
4	RANS 699/ NSID 699 Dissertation <i>Writing Dissertation, Writing Manuscript</i> <i>Dissertation Defense Examination</i>	RANS 699/ NSID 699 Dissertation <i>Dissertation Defense Examination</i>

** Required total research experiences 180 hours.

All students are encouraged to register in elective courses specify for their dissertation topics.

In addition to the required minimum 48 credits (for study Plan 1.1) and 52 credits (for study Plan 2.1), each student is also required to complete 240 hours (for study Plan 1.1) and 180 hours (for study Plan 2.1) to enhance his/her research experiences by participating in such activities as working as a research assistant in the advisor's research project or attending a nursing research conference or other research or academic activities that are approved by the program committee.

18. Course Description

18.1 Required Courses

	Credits (lecture-lab Self-Study)
RANS 608 Philosophy of Science and Nursing Science	2(2-0-4)
Conceptualization and evolution of science and human science, epistemology and ontology of natural science and human science; Western and Eastern philosophy; Epistemology and ontology of nursing science; Various philosophies influence nursing science development; Trend in nursing science development	
NSID 551 Nursing Leadership in Health Delivery System	2(2-0-4)
Nature of global leaders; Advanced leadership skills; Strategic leaders; Ethical leaders; Cultural issues related to leaders, Issues and trends related to nurse leaders and health care system; Contemporary issues related to nurse leaders and profession; Policy development; Political involvement and participation in national and international health care policy; Strategies to promote health equity and social justice to mankind according to United Nation's recommendations	
RANS 609 Advanced Research Design in Nursing	2(2-0-4)
Nursing science and nursing research; Development of a conceptual framework for research; Issues in research validity and selected research design; Theory of sampling and sample size determination, measurement theory, instrument development and data collection; Data management; Research ethics; Issues and trends in nursing research	

NSID 552 Nursing Theory Development**2(2-0-4)**

Knowledge development in nursing science; Process and steps of theory construction; Strategies for concept, proposition, and theory development including analysis, synthesis, and derivation; Middle-range theories in advancement of nursing science; Theory testing and theory evaluation

RANS 651 Advanced Statistics in Health Sciences**2(2-0-4)**

Application of multivariate statistical analyses to health sciences research based on research ethics; Analysis of repeated measure, multivariate analysis of variance and covariance, multiple classification analysis, logistic regression analysis, discriminant analysis, cluster analysis, exploratory factor analysis, path analysis, analysis of structural equation modeling, multiple group analysis and analysis of hierarchical linear modeling; Data interpretation and reporting

NSID 558 Qualitative Research**2(1-2-3)**

Concepts of qualitative research, qualitative research relevant to nursing phenomena; Phenomenology, grounded theory, ethnography, and participatory action research; Training for conducting qualitative research, collecting and analyzing qualitative data regarding quality and ethics

18.2 Elective Courses**Credits (lecture-lab Self-Study)****RANS 629 Gender and Health: Theory and Research****2(2-0-4)**

Philosophical and theoretical foundation of gender and health; Methodological approaches to gender and health research; The linkage of research related to contemporary gender health issues across life span and cultural diversity; Presentation of research ideas for further study in selected area of interest with regard to gender and health

NSID 525 Seminar in Nursing and Health Policy Development**2(2-0-4)**

Analysis of needs, existing health care policies and resources for the selected population; Developing research and a position paper for improving health/ nursing service system and model of care for the selected population

RANS 630 Family Health Studies **2(2-0-4)**

Theories and research related to families and family health; Family health assessment; Laws related to family; Factors related to family health and well-being; Family health promotion and family intervention models; Social and health policy related to family; Contemporary issues and research on family well-being and health

NSID 555 Health Promotion **2(2-0-4)**

Theoretical underpinnings of health behavior and health promotion strategies; Factors influencing health promotion and risk reduction behavior; Application of the related principles and policy to develop health promotion and risk reduction intervention with individuals, groups, and communities; The interdisciplinary nature of health promotion and risk reduction intervention research

RANS 652 Measurement and Instrumentation **2(2-0-4)**

The principles of measurement and measurement theories; Instrument construction and evaluation; Critical evaluation of existing instruments in terms of construct, psychometric properties, cultural bias, sensitivity and ethical issues; Instrument translation methods and process

NSID 557 Stress, Coping and Adaptation **2(2-0-4)**

Theoretical models of self-regulation; Stress, coping and adaptation processes, psychological resources; Stress and psychoneuroimmunological (PNI) effects; Factors influencing stress and coping with illness in different cultures; Effective stress management strategies to inform policy of nursing practices and healthcare services in clients and their families with critical and chronic conditions

RANS 690 Outcome Research: Measurement and Management **2(2-0-4)**

Analysis and critique of theories and research related to outcome measurement, outcome management for quality improvement of the system at the different level; Designs, measurements and methods for studying variation in clients and health outcomes; Knowledge synthesis, knowledge management and its application for the efficiency and effectiveness of nursing and health care systems

NSID 671 Mixed Methods Research 2(2-0-4)

Mixed methods approaches; epistemological and paradigmatic implications of mixed methods; types of research problems addressed by mixed methods of inquiry, designs, data collection strategies, data analysis; Integration of quantitative and qualitative data in reporting findings

RANS 695 Chronic Illness 2(2-0-4)

Concepts, theories, research, health policy, contemporary health issues, and factors related to chronic illness/conditions; Strategies, innovation, and technology in management of chronic illness/conditions in selected populations with chronic illness/conditions and their families in diverse settings and cultures; Health outcomes concerning cost-effectiveness

NSID 672 Care Management of Chronic Illness in Community 2(2-0-4)

Synthesis of knowledge based on theoretical and empirical literatures related to chronic illness management across life's span and diverse health care settings; Models of chronic care; Designs of chronic care management to enhance quality of care and strong ties to the hospital and community; Development of a research plan for comprehensive care in a selected group of individuals, families, and communities

NSID 673 Critical and Emergency Care System 2(2-0-4)

Current situation, health workforce, concepts in provision and research in critical and emergency care; Resource utilization; Health indicators; Strategies for integration of professional performance standards; Trends in role expansion of nursing practice; Issues and trends of treatment modalities in critical and emergency conditions

NSID 674 Scholarly Inquiry in Nursing Science 2(2-0-4)

Critique of research program; Analysis of conceptual, theoretical, ethical, evidence-based knowledge, systematic review, research methods to answer research question according to focused area; Relationship of scholarly project to evidence-based knowledge of nursing science; Translation of nursing research into practice; Application of research methods to develop the scholarly project; Development of scholarly inquiry project in selected topic of interest

RANS 669/NSID 567 Selected Topic in Nursing**2(2-0-4)**

Selected nursing issues in caring for patients with chronic illness, health promotion, health system, and nursing system

18.3 Dissertation**Credits (lecture-lab Self-Study)****RANS 898/NSID 898 Dissertation*****48(0-144-0)**

Identifying research proposal; Conducting research with concern of research ethics; Data collection, analysis, interpretation of the result and report the result in terms of thesis; Presenting and publishing research in international peer-reviewed journal

* Code for study Plan 1.1

RANS 699/NSID 699 Dissertation****36(0-108-0)**

Identifying research proposal; Conducting research with concern of research ethics; Data collection, analysis, interpretation of the result and report the result in terms of thesis; Presenting and publishing research in international peer-reviewed journal

* Code for study Plan 2.1

19. Grading System

Grades given in each course are based on student's performance in the final examination, tests, essays and reports, presentations and other forms of classroom participation, assignments, and laboratory exercises, although not all these elements may be present in each course. Students will not be given any grade for the course nor be allowed to sit for the examination of that course if their names are not on the class enrollment list.

<i>Letter Grades</i>	<i>Definitions</i>
A	Excellent
B+	Very Good
B	Good
C+	Fairly Good
C	Fair
D+	Poor
D	Very Poor
F	Fail

<i>Other Designations</i>	<i>Definitions</i>
S	Satisfactory
U	Unsatisfactory
I	Incomplete
P	In Progress
W	Withdrawal
AU	Audit
X	No Report

The audited (AU) designation will be assigned when an auditing student has completed, to satisfaction of the instructor, any conditions established at registration as an auditor.

An incomplete (I) grade is used when an exam is not taken, or work is delayed/incomplete due to a certain reason, such as a medical problem. The grade I must be converted to a regular grade under three options: (1) the student must take re-exam or submit the extra assignment within one month after being informed the grade; (2) the student must complete the extra assignment within the next semester; (3) the student has to re-take the course as soon as the course is available and the registration for the course is not required.

The withdrawal without penalty (W) grade is given when a student withdraws from a course after the “add-drop” period and prior to the prescribed deadline for course withdrawal.

Grade Requirements

For all postgraduate programs, the average course grade obtained for satisfying degree requirements must at least be “B” for core courses and required courses and at least be “C” for elective courses. However, the average grade points for graduation must be at least 3.00.

20. Qualifying Examination

Purpose

The qualifying examination (QE) aims to evaluate a doctoral student’s capability in critically analyzing and synthesizing knowledge relevant to the discipline of nursing and research methodology, as well as a scholarly inquiry about the area of the student’s interest. The examination includes both written and oral components. The program will announce the procedures and timeline as per the Administrative Program Committee's consideration when the coursework finishes. The student should demonstrate sufficient expertise in the theoretical and methodological issues related to the problem as a basis to pursue his/her research. The specific

purposes of the examination are to move to the candidacy, to begin the preliminary work on the dissertation, and to provide students the opportunity to engage in scholarly discourse with the faculty and obtain expert guidance.

Timeframe

Study Plan 1.1: a doctoral student is eligible to take the QE after completion of dissertation course (12 credits).

Study Plan 2.1: a doctoral student is eligible to take the QE after completion of required courses (12 credits) and pass with GPAX at least 3.00 of 4.00 scale. To set for the QE, a student must complete Year one, including required and elective course work in a total of 16 credit hours. The students must have all incomplete courses cleared from their record to take the QE.

The qualifying examination, both written and oral components, for all students cohort 2022 is tentatively scheduled in September, 2023. The Ph.D. qualifying examination schedule and instructions to complete the examination will be announced further.

Evaluation

1. A doctoral student will pass the QE when he/she demonstrates his/her knowledge, ability to analyze, solve the problem, and apply knowledge to design research systematically, which reflects the student's readiness to develop his/her future research.

2. If a student fails the QE, she/he will have one more chance for re-examination as scheduled by the program. A student who fails the QE for the second time will be dismissed from the program. However, she/he may be allowed to change to a master's degree program in nursing or related fields with the approval of the Administrative Program Committee of both programs, and Dean of Faculty of Graduate Studies. (More information, please visit <http://www.grad.mahidol.ac.th/thesis/step-doctoral-en.php>)

21. Dissertation

The website of the Faculty of Graduate Studies is the main source of information on dissertation regulations. Please visit <http://www.grad.mahidol.ac.th/thesis/index-en.php>

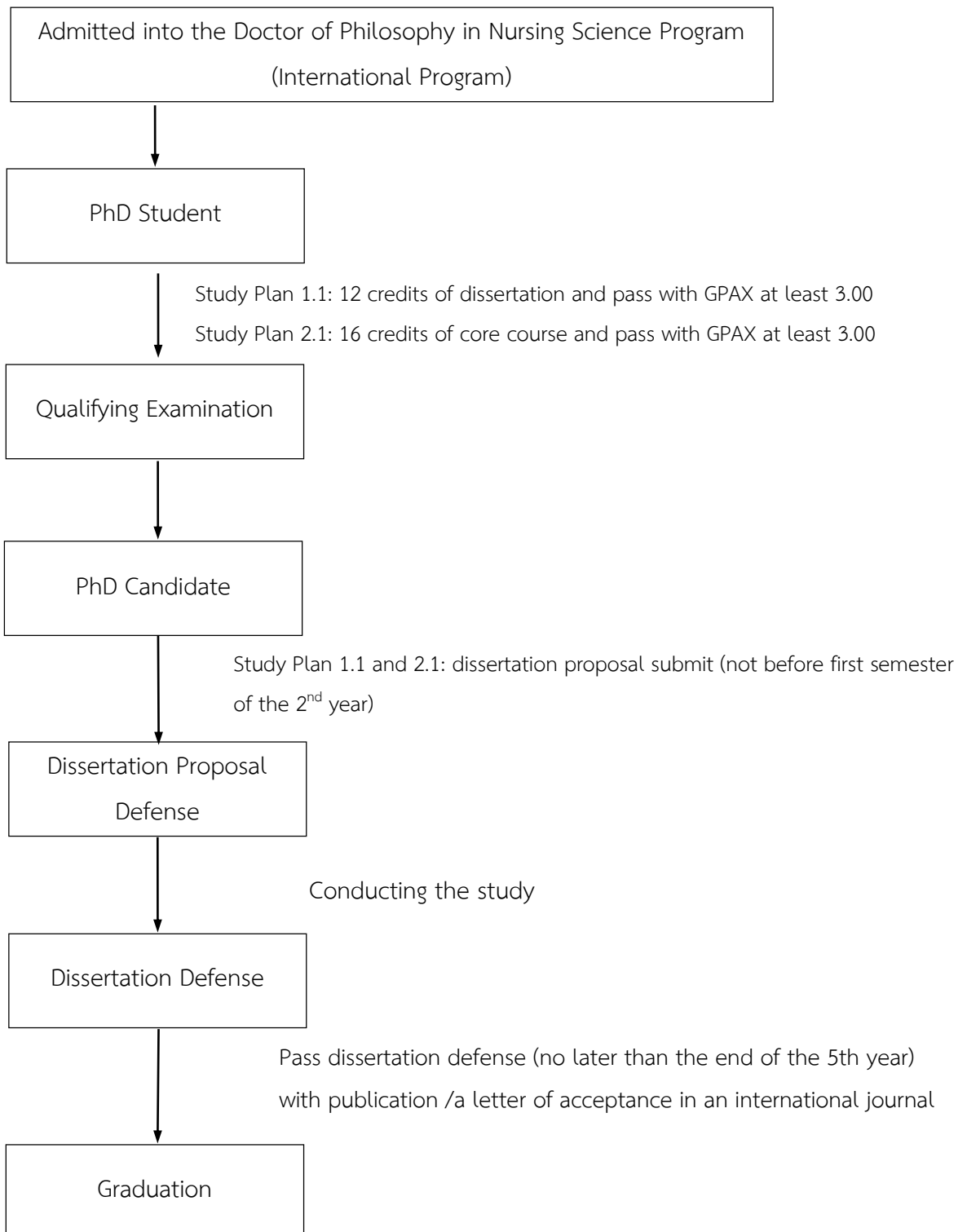
Guidelines for Dissertation Planning

Once a PhD candidate has identified committee members, he or she should obtain official approval of committee membership from the Program Chair by submitting in writing a summary of the dissertation plan and information on the composition of the committee. The student may consult informally with potential committee members in preparing the dissertation plan summary.

When the Program Chair has approved the dissertation committee membership, a nomination form will be submitted to the Faculty of Graduate Studies.

Once approval of the committee is achieved, the student works closely with committee members to clarify procedures, methodology, and timetable for the dissertation. The guidelines in the Thesis Guideline Handbook regarding the procedures for oral defense and evaluation should be followed. When the oral defense is scheduled, students should inform the Office of the Doctoral Program so that an announcement of the date, time and topic can be made.

Steps of Students Progress in the Program



22. Academic Advisor

The faculty advisor is assigned by the Program Chair in consult with the Doctoral Program Committee. Every effort is made to “match” the student with an advisor whose research and clinical interests are similar to those of the student. Also, an effort is made to consider faculty workloads, so that advisement load is well distributed.

Most students keep the same academic advisor throughout their coursework. However, if a student should have a reason to request a change of advisor, this may be done in writing to the Program Chair, providing a justification for the request.

The advisor helps the student to plan initial coursework. By the time the student is ready to take the qualifying examination, the role of the advisor is less active and the student’s research advisors begin to play a major role.

Role of Academic Advisor (Tentative Dissertation Advisor)

Faculty advisors contribute to their students’ planning in the following ways:

- Be a primary faculty contact person for the student.
- Provide expertise in content areas related to student interests
- Be an information source for program planning
- Advise on professional development matters and career counseling.

23. Partnership Schools

This program has collaboration with many institutions in foreign countries as the partnership schools. Students may select to study in the partnership school for one year with the scholarship from the Commission on Higher Education, Ministry of Education; their own scholarship; or scholarship from their own institutions. The objectives of studying at the partnership school will be as follows:

1. Developing their dissertation proposal.
2. Attending some courses, which will help students expand their conceptualization in conducting their dissertation.
3. Helping their mentors/preceptors (if appropriate) in any phases of the research project to gain experience in research practicum.

However, the plan of study in the partnership school will be established in collaboration between the faculties of two institutions, that is, Mahidol University (Faculty of Nursing and

Ramathibodi School of Nursing) and the partnership school, who will also serve on the Dissertation Committee.

The current partnership schools include:

Australia

School of Nursing and Midwifery, Deakin University

Canada

School of Nursing, University of Alberta, Canada

United States of America

1. College of Nursing, University of Illinois, Chicago
2. School of Nursing, Johns Hopkins University
3. School of Nursing, University of Michigan
4. School of Nursing, University of North Carolina at Chapel Hill
5. School of Nursing, University of Pennsylvania
6. School of Nursing, University of Wisconsin, Madison
7. School of Nursing, Yale University
8. School of Nursing, University of Washington, Seattle
9. School of Nursing, University of Minnesota
10. School of Nursing, Columbia University

24. Student appeal

If students question grading or any other concerns, they can appeal by meeting in person with the Program Chair or Dean of the Faculty of Graduate Studies. Students can also appeal by putting their messages in the appeal box available in the study buildings. In addition, appeal procedure can be done online through the institutes' websites as follows:

Faculty of Nursing, Mahidol University website:

<https://ns.mahidol.ac.th/phdnursing>

Ramathibodi School of Nursing website:

https://www.rama.mahidol.ac.th/nursing/cnsc/frm_service.php

Faculty of Graduate Studies website:

<http://www.grad.mahidol.ac.th/grad/complain/HelpLogin.php?lang=th>

All appeals are kept confidential and anonymous.

25. Professional and Personal Skills Development (Soft skills)

Professional and Personal Skills Development or Soft skills are important for becoming successful graduates both in work and personal life. The graduate students in Mahidol University are required to undertake skill development activities. There are six skills as follows:

1. Health Literacy Skills (For students with ID 62 onwards)
2. Entrepreneurial Literacy Skills (For Students with ID 62 onwards)
3. Communication and Language Skills
4. Creative and Innovative Skills (For students with ID 61 onwards)
5. Digital Literacy Skills
6. Leaderships and Management Skills

Soft skills which students undertake must cover four skills and must not be less than 12 hours. Students must spend at least 3 hours for each skill. Please visit <https://graduate.mahidol.ac.th/softskills/inter/>

Office of Doctoral Program

During the academic year 2022-2025, the responsible persons of the program are:

1. Tassanee Prasopkittikun, Ph.D., RN.
Associate Professor and Program Chair
Faculty of Nursing, Mahidol University
Phone: 0-2419-7466-80 Ext. 1861, 1863
E-mail: tassanee.pra@mahidol.ac.th
2. Manee Arpanantikul, Ph.D., RN.
Associate Professor and Program Co-Chair
Ramathibodi School of Nursing, Faculty of Medicine Ramathibodi Hospital,
Mahidol University
Phone: 0-2201-1601
E-mail: manee.arp@mahidol.ac.th
3. Aurawamon Sriyuktasuth, DSN, RN
Associate Professor and Program Secretary
Faculty of Nursing, Mahidol University
Phone: 0-2419-7466-80 Ext. 1951
E-mail: aurawamon.sri@mahidol.ac.th
4. Miss Anyarat Muangprasert
Education Management Officer
Faculty of Nursing, Mahidol University, Bangkok Noi, 3rd floor
Phone: 0-2419-7466-80 Ext. 2542, 2543
E-mail: anyarat.mun@mahidol.ac.th
5. Miss Sunisa Buaprasert
Education Management Officer
Ramathibodi School of Nursing, Faculty of Medicine Ramathibodi Hospital,
Mahidol University
Phone: 0-2201-2174
E-mail: sunisa.bup@mahidol.edu

Important Information of Offices

Faculty of Nursing, Mahidol University

1. 2 Wang Lang Road, Bangkoknoi, Bangkok 10700, Thailand.

Tel: 0-2419-7466 – 80 Ext. 1411, 1413

Fax: 0-2412-8415

2. 999 Phuttamonthon 4 Road, Salaya,
Nakhon Pathom 73170, Thailand.

Tel: 0-2441-5033 Ext. 2542, 2543

Fax: 0-2441-5397

Website: <http://www.ns.mahidol.ac.th>

Ramathibodi School of Nursing, Faculty of Medicine Ramathibodi Hospital, Mahidol University

270 Rama VI Road, Ratchathewi, Bangkok 10400, Thailand.

Tel: 0-2201-2174

Fax: 0-2201-2858

Website: <https://med.mahidol.ac.th/nursing/en/Academic/Doctor-Program-Inter>

Faculty of Graduate Studies, Mahidol University

Graduate Studies Building

25/25 Phuttamonthon 4 Road, Salaya,

Nakhon Pathom 73170, Thailand.

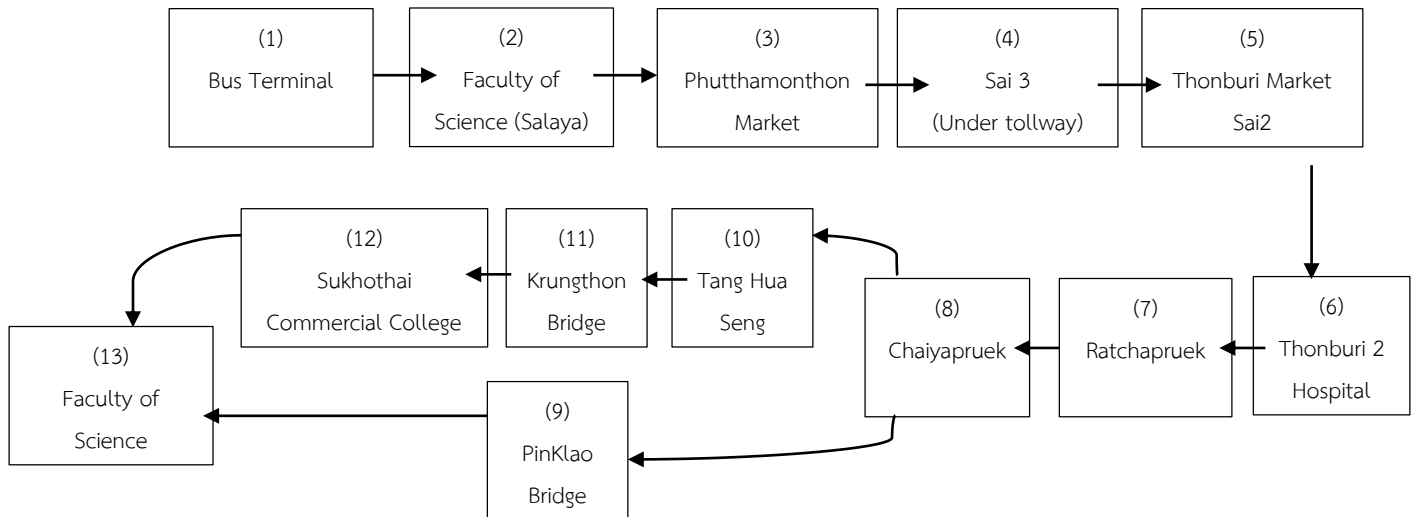
Tel: 0-2441-4125

Website: <http://www.grad.mahidol.ac.th/en/>

Mahidol University Shuttle bus

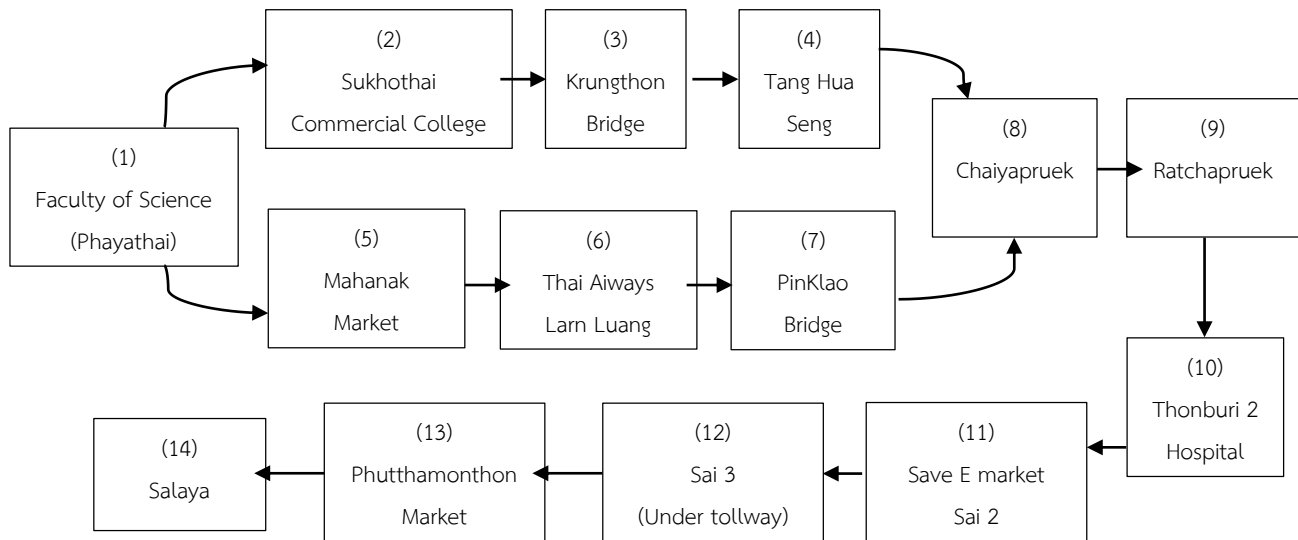
Mahidol University provides a shuttle bus service for staff and students between its Salaya, Phayathai and Bangkok Noi Campuses. The service is free of charge.

- **Salaya to Faculty of Science (Phayathai)**



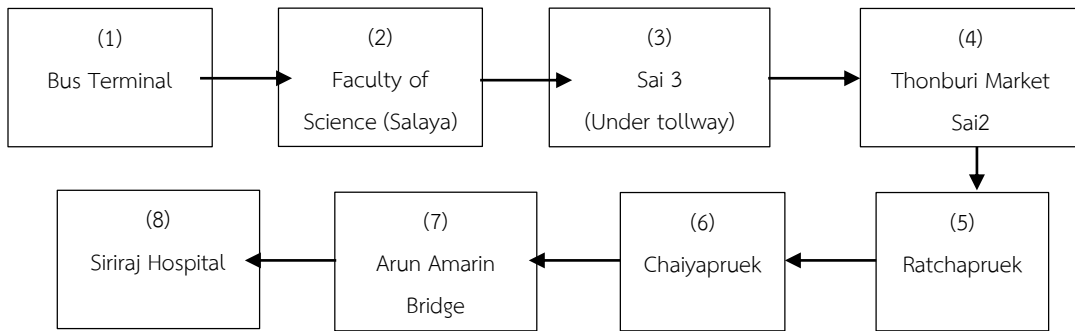
Morning Round			Afternoon Round		
Time	Route	Bus Stop	Time	Route	Bus Stop
5.30	Pinklao	1,2,9,13	1.00	Pinklao	1,7,8,9,13
5.45	Pinklao	1,2,9,13	2.30	Pinklao	1,7,8,9,13
5.55	Pinklao	1,2,9,13	3.15	Pinklao	Depend on passneger
7.00	Pinklao	1,2,9,13	3.45	Pinklao	
8.30	Pinklao	1,2,8,9,13	4.15	Krungthon	
9.00	Pinklao	1,2,8,9,13	4.45	Pinklao	
10.00	Pinklao	1,2,8,9,13	4.50	Pinklao	
11.00	Pinklao	1,2,8,9,13	5.15	Krungthon	
11.30	Krungthon	1,13	5.45	Krungthon	
12.00	Pinklao	1,7,8,9,13			

● Faculty of Science (Phayathai) to Salaya



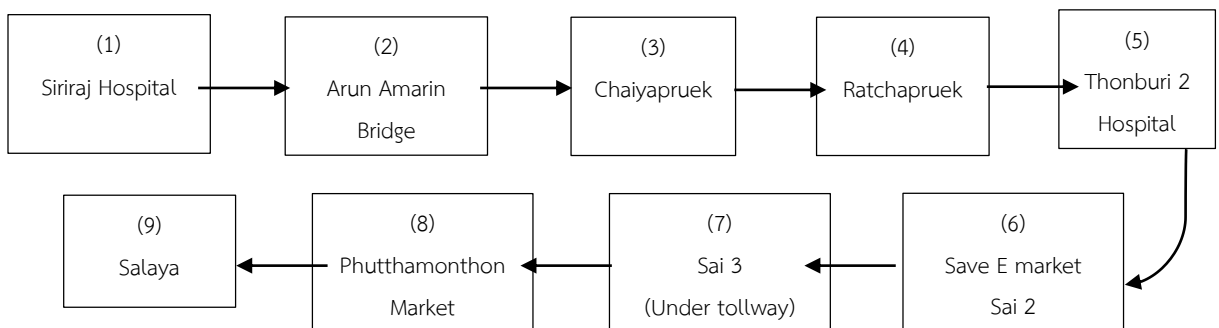
Morning Round			Afternoon Round		
Time	Route	Bus Stop	Time	Route	Bus Stop
6.40	Pinklao	1,5,6,7,10,12,13,14	1.00	Pinklao	1,14
7.15	Pinklao	1,5,6,7,10,12,13,14	1.35	Pinklao	1,14
7.30	Krungthon	1,2,3,4,8,9,10,11,12,13,14	2.20	Pinklao	1,14
8.00	Krungthon	1,2,3,4,8,9,10,11,12,13,14	3.45	Pinklao	Depend on passneger
8.30	Krungthon	1,2,3,4,8,9,10,11,12,13,14	4.35	Pinklao	
11.00	Pinklao	1,14	5.45	Krungthon	
12.30	Pinklao	1,14	6.35	Krungthon	
12.45	Krungthon	1,14			

● Salaya to Siriraj



Morning Round			Afternoon Round		
Time	Route	Bus Stop	Time	Route	Bus Stop
5.30	Pinklao	1,2,7,8	1.10	Pinklao	1,2,6,7,8
6.00	Pinklao	1,2,7,8	3.45	Pinklao	Depend on passneger
6.15	Pinklao	1,2,7,8	4.55	Pinklao	
9.30	Pinklao	1,2,6,7,8	5.45	Pinklao	
10.00	Pinklao	1,2,6,7,8			
11.00	Pinklao	1,2,6,7,8			

● Siriraj to Salaya



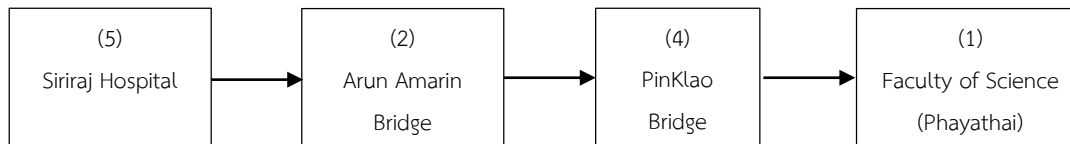
Morning Round			Afternoon Round		
Time	Route	Bus Stop	Time	Route	Bus Stop
7.15	Pinklao	1,2,3,4,5,7,8,9	1.30	Pinklao	1,4,9
7.30	Pinklao	1,2,3,4,5,7,8,9	2.00	Pinklao	1,4,9
7.45	Pinklao	1,2,3,4,5,7,8,9	4.35	Pinklao	Depend on passneger
10.30	Pinklao	1,4,9	5.18	Pinklao	
11.30	Pinklao	1,4,9	5.45	Pinklao	
12.45	Pinklao	1,4,9	6.00	Pinklao	
			6.30	Pinklao	

- Faculty of Science to Siriraj



Morning Round			Afternoon Round		
Time	Route	Bus Stop	Time	Route	Bus Stop
10.00	Pinklao	1,4,5	1.00	Pinklao	1,4,5
12.00	Pinklao	1,4,5	4.15	Pinklao	Depend on passneger
			5.05	Pinklao	

- Siriraj to Faculty of Science



Morning Round			Afternoon Round		
Time	Route	Bus Stop	Time	Route	Bus Stop
6.30	Pinklao	1,2,3,4	Unavailable		
7.15	Pinklao	1,2,3,4			
10.15	Pinklao	1,2,3,4			
11.45	Pinklao	1,2,3,4			

More information: <https://op.mahidol.ac.th/ga/shuttle-bus/>

Scan here:



Appendix



Mahidol University

Announcement

Doctor of Philosophy Program in Nursing Science

(International Program)

Ramathibodi School of Nursing, Faculty of Medicine Ramathibodi Hospital and
Faculty of Nursing

Subject: Hours and Activities Required for Research Experience

The Doctor of Philosophy Program in Nursing aims to develop doctoral students' research skills with a broad range of activities that create a community of scholars among participating students. According to the Program Administrative Committee meeting on May 24, 2019, the announcement on the subject "Hours and Activities Required for Research Experience" dated November 16, 2016 has been cancelled.

Currently, each student is required to complete at least 180 hours of the research experience that will include any of the following activities:

1. Practice as a research assistant for faculty's research project;
2. Participate in the doctoral forum held by any institute;
3. Participate in the research seminar held by the program;
4. Attend any of following workshops/trainings;
 - a. research methodology or research instruments,
 - b. ethical conduct in human research,
 - c. basic good clinical practice for research involving human subjects,
 - d. academic or research writing workshop;
5. Participate in academic conferences related to health and research.

Any other out-of-class activities not mentioned above may be considered by the Program Administrative Committee.

All students of cohorts 2014 onwards must complete 180 hours of research experience before their dissertation defense.

Date of Announcement: June 7, 2019

A handwritten signature in blue ink, reading "Porntip Malathum".

(Assistant Professor Dr. Porntip Malathum)

Program Chair, Doctor of Philosophy Program in Nursing Science
(International Program)

Mahidol University
 Doctor of Philosophy Program in Nursing Science
 (International Program)
 Group 22, Year 2022

No	Student's ID	Student's Name	Contact Email	Nursing Mu Email*
1	6536123 NRNS/D	MISS PIYAPORN PRAISON	piyaporn.pra@mfu.ac.th	6536123@nursingmu.org
2	6536124 NRNS/D	ASST.PROF. CHATKAMON PRACHUABLARP	c.klinmalai@gmail.com	6536124@nursingmu.org
3	6536125 NRNS/D	MISS YANISA DUENGDUEN	yanisa.d@stin.ac.th	6536125@nursingmu.org
4	6536126 NRNS/D	MISS BUDSARA HIRANSAROJ	budsara.hiran@gmail.com	6536126@nursingmu.org
5	6536127 NRNS/D	MISS NATTHAYA CHABUAKAM	natthaya@bcnsp.ac.th	6536127@nursingmu.org
6	6536505 NRNS/D	MRS. KANOKWAN KULACHAT	kanoku@kku.ac.th	6536505@nursingmu.org
7	6536506 NRNS/D	MRS. RISA DEEJUTHAMANE	pankboong@gmail.com	6536506@nursingmu.org
8	6536507 NRNS/D	MISS PINYAPAT KITTHANYATEERAKUL	pinyapat.kit@gmail.com	6536507@nursingmu.org
9	6537781 NRNS/D	MISS CHAWIRAT CHUNCHOMGUL	chawirat07@gmail.com	6537781@nursingmu.org
10		MRS. YUNPING ZHANG	1049195548@qq.com	nrns0001@nursingmu.org
11		MISS MANLI YANG	yang_2022022@126.com	nrns0002@nursingmu.org
12		MISS TAO CHUN WU	1207062313@qq.com	nrns0003@nursingmu.org
13		MRS. LIXIANG LI	ichilisa@outlook.com	nrns0004@nursingmu.org
14		MR. LIFEI WANG	wlfly1018@163.com	nrns0005@nursingmu.org
15		MR. KAI FU	506328940@qq.com	nrns0006@nursingmu.org

* Students must use password: Nsmu0000 for logging in at the first time. After that students can change to your own password.